

## Sleeve Pattern Update

Version: 3a

### What is this?

This is a replacement to the sleeve design found on all Scrubhub patterns. It answers problems Hubs were reporting and fixing locally.

### Why is it being issued?

An issue was found where the sleeve design in the original pattern was too short to correctly form the sleeve and still have enough material to hem and attached to the body of the top.

### What has changed?

The length of the sleeve pattern has been lengthened by 9% or 50mm. The top of the pattern where it attaches to the top of the shoulder has also been lengthened (made taller as shown on the page) also by around 2% or 7mm. The overall shape has been tweaked slightly to accommodate these changes and retain the overall shape and fit.

### Should I use this update?

Please check with your local coordinator, local hub, or pattern supplier to see if you should use this. If you are sewing individually then please check the fit. The original pattern can be used but it is difficult to make fit well and needs adjustment during sewing. This update has been applied to patterns we have sent with Version 1d or greater.

### How do I use apply this?

Print out this document. The last 5 pages are a self-assembly version of the new design. When printing you **must** print the document at Actual Size. PDF programmes vary in what they might call this. Some popular programmes:

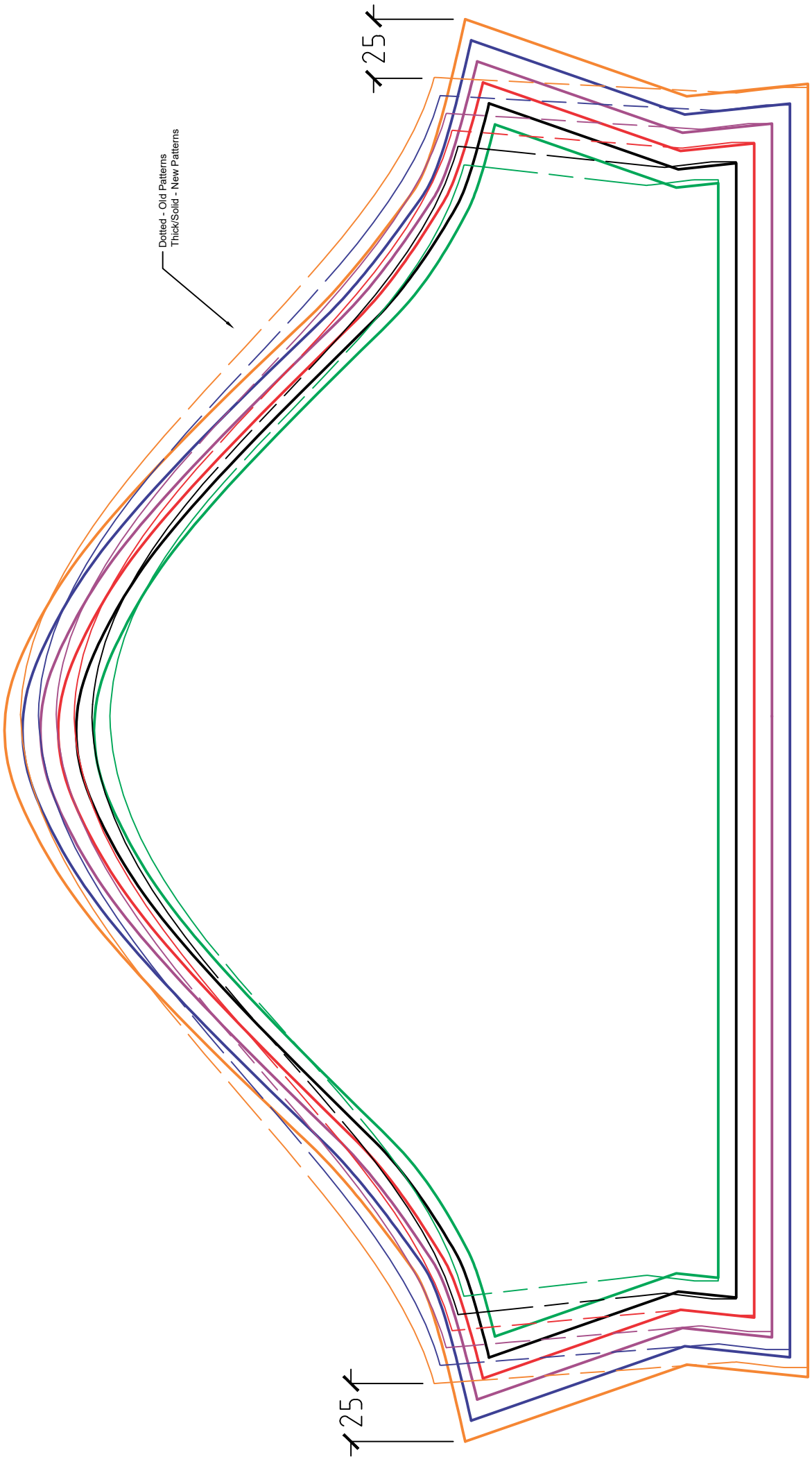
- Adobe Acrobat: Size Options: click Actual size
- Google Chrome: Click More Settings then: Scale – set to *Customised* and then set the box below to: 100.
- Microsoft Edge: Scale – set to *Actual size*
- Firefox: press Alt and F together. Then select Print Preview on the menu that appears. Set Scale to 100%.

Once you have printed please use the Print Test and compare the printed scale to a ruler. Do not use the pattern if the scale does not match.

### I don't have a printer!

OK – no problem. The most important change is the increase the width by 25mm or 1 inch on either side. See the differences on the drawing below. The final pattern should be 595mm or 23.4 inches across on the 3XL grade.

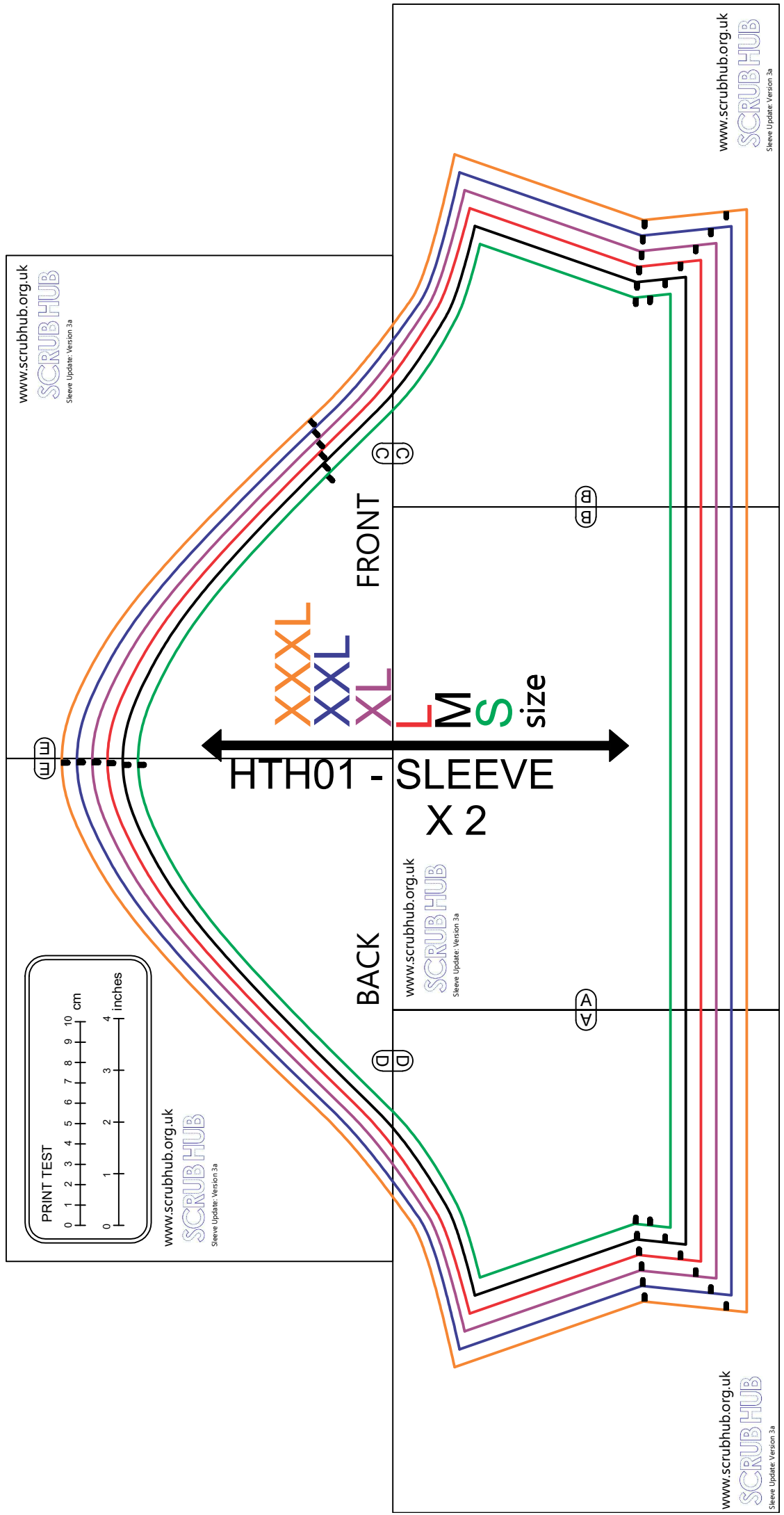
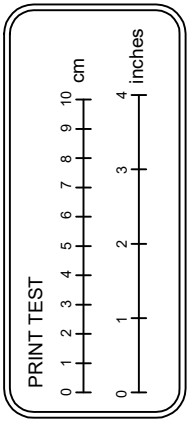
Happy sewing!



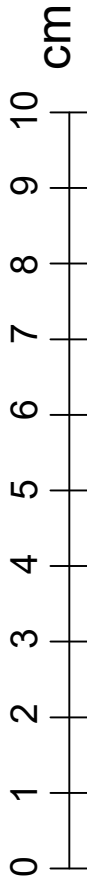
Dotted - Old Patterns  
Thick/Solid - New Patterns

25

25



PRINT TEST



[www.scrubhub.org.uk](http://www.scrubhub.org.uk)

SCRUBHUB

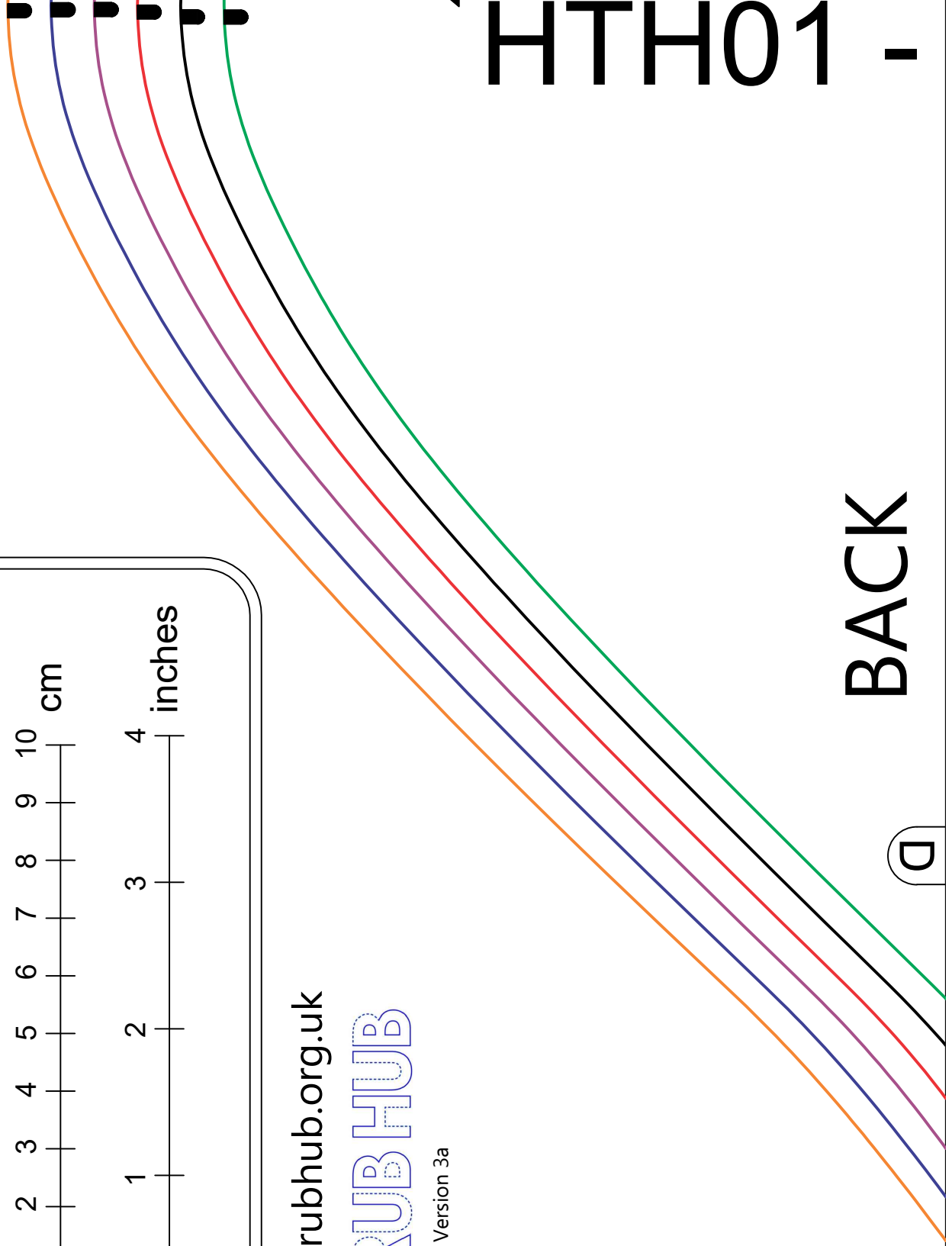
Sleeve Update: Version 3a

HTH01 -

BACK

D

W

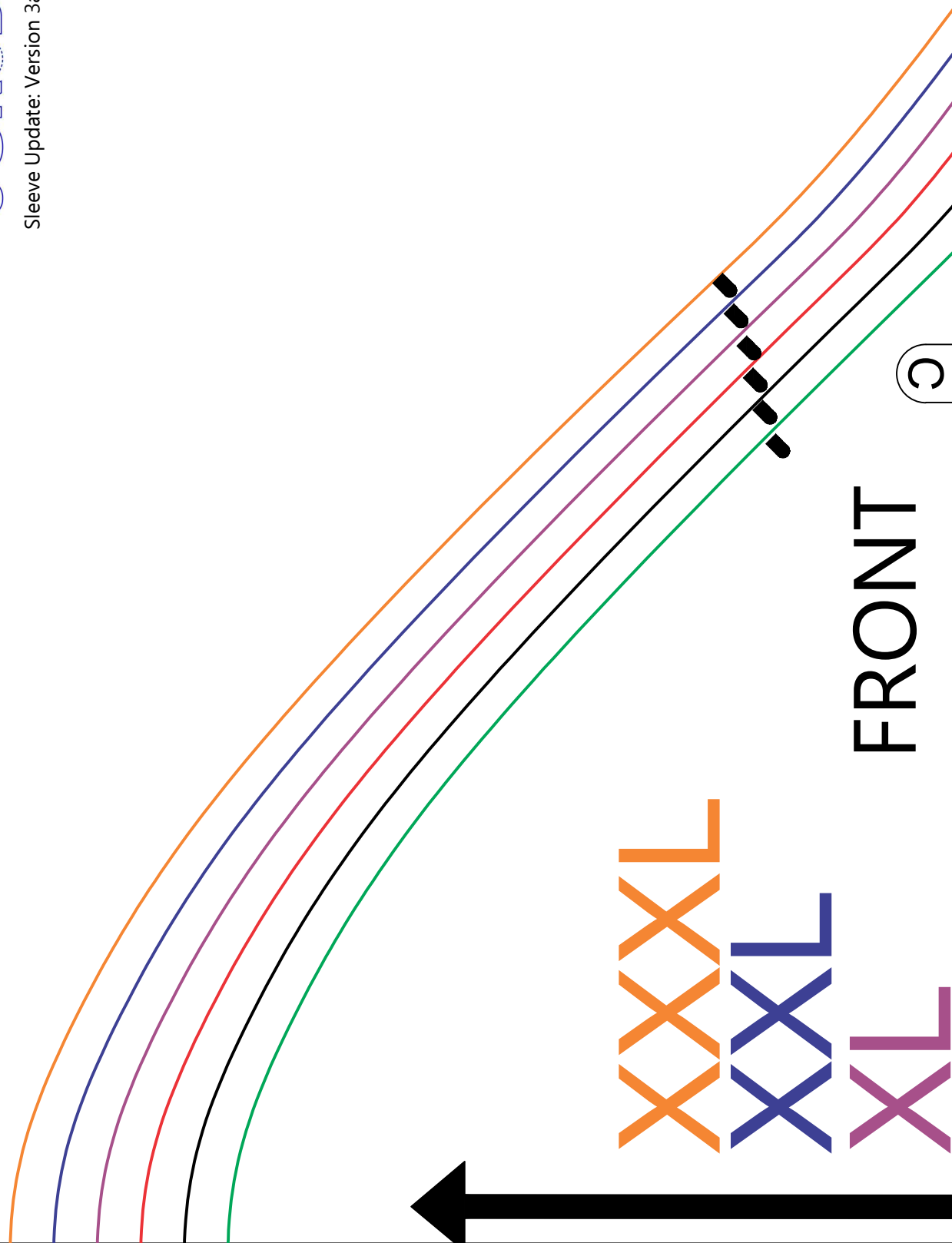


www.scrubhub.org.uk

SCRUBHUB

Sleeve Update: Version 3a

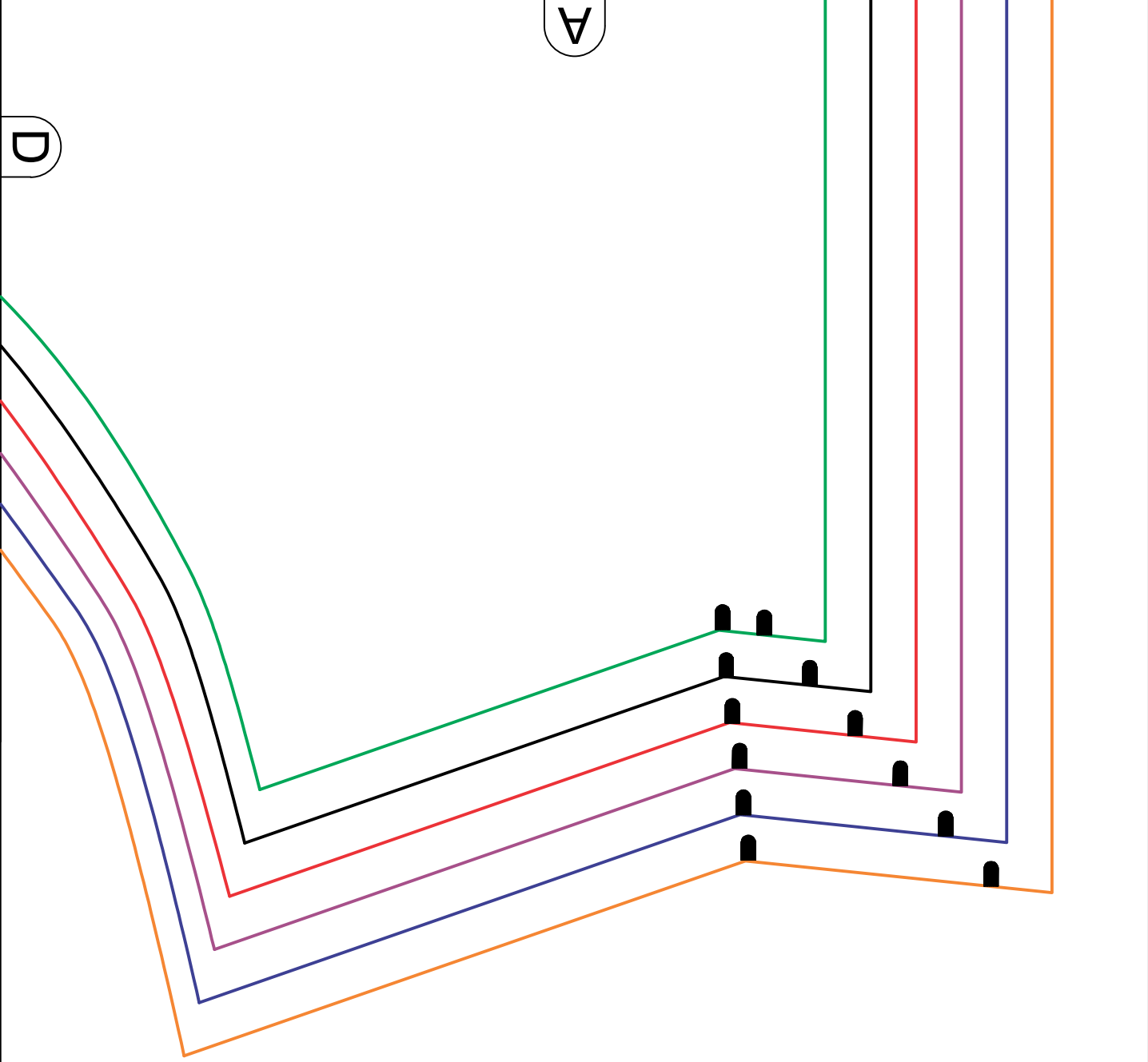
W



XXXXL  
XXXL  
XL

FRONT

C



[www.scrubhub.org.uk](http://www.scrubhub.org.uk)

SCRUBHUB

Sleeve Update: Version 3a

[www.scrubhub.org.uk](http://www.scrubhub.org.uk)

SCRUBHUB

Sleeve Update: Version 3a

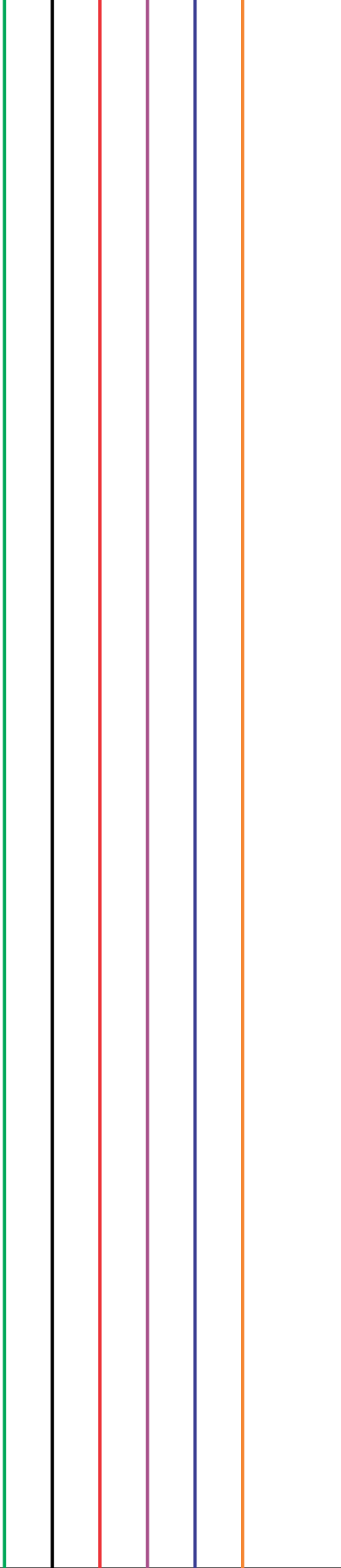
**SLEEVE**  
**X 2**

**L M S** size



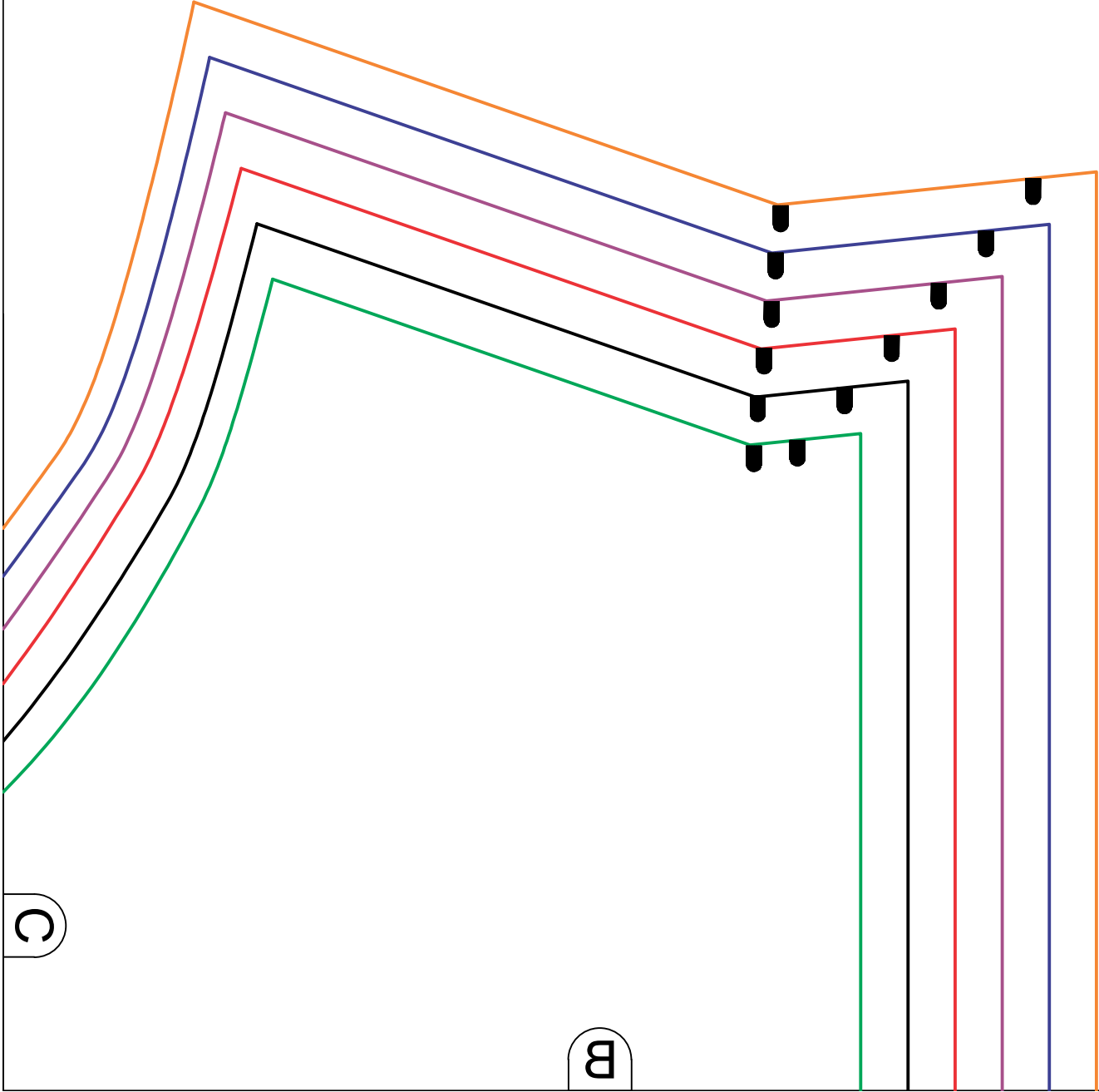
A

B



C

B



[www.scrubhub.org.uk](http://www.scrubhub.org.uk)

SCRUBHUB

Sleeve Update: Version 3a